

Upgrade method 1: Upgrade via WebUI

Note: ISP firmware can be upgraded via WebUI, ARM firmware of the camera on your hand is or later than 3.0A version can be upgraded via WebUI, ARM firmware of the camera on your hand before 3.0A can only be upgraded via Serial port.

Warning: Please confirm the following items before upgrading

1. Please make sure you have set the right IP address, Gateway, and subnet mask.
2. Please make sure there are no two devices with the same IP address on the network, otherwise, the upgrade process may cause one of the cameras to be abnormal.
3. Make sure the network connection between the camera and PC is reliable before upgrading, the connection between the camera and the PC needs to be connected through a switch or router (recommended).

1. Open the camera WebUI and select the "setting"

Video Encode

Stream	Main	Sub
Enable	<input checked="" type="checkbox"/>	<input checked="" type="checkbox"/>
Encode Mode	<input type="text" value="H.264"/>	<input type="text" value="H.264"/>
RTSP Address	rtsp://192.168.1.188:554/stream/main	rtsp://192.168.1.188:554/stream/sub
RTMP Address	rtmp://192.168.1.188:1935/app/rtmpstream0	rtmp://192.168.1.188:1935/app/rtmpstream1
Resolution	<input type="text" value="1920x1080"/>	<input type="text" value="1280x720"/>
Bitrate(Kb/s) (1024-20480)	<input type="text" value="4096"/>	<input type="text" value="2048"/>
Framerate	<input type="text" value="30"/>	<input type="text" value="30"/>
Bitrate Control	<input type="text" value="CBR"/>	<input type="text" value="CBR"/>
I Frame Interval (5-120)	<input type="text" value="30"/>	<input type="text" value="30"/>

Save

Video Configuration

Video Encode

Image Parameter

Network Configuration

Ethernet

System Configuration

Firmware Upgrade

Reset to default

Account

2. Select "Firmware Upgrade"

Firmware Upgrade

Control Version	1.0.0.1
Device Name	
Serial Number	2279d0a4c1c7
Bootloader Version	V1.0.0
System Version	V1.0.0
App Version	Ver256
Upgrade	<div>Select File</div>

Video Configuration

Video Encode

Image Parameter

Network Configuration

Ethernet

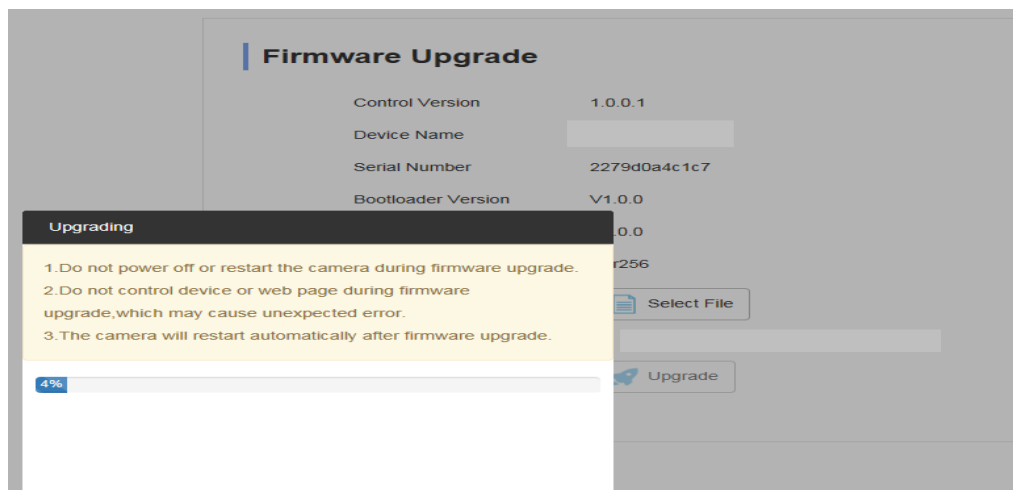
System Configuration

Firmware Upgrade

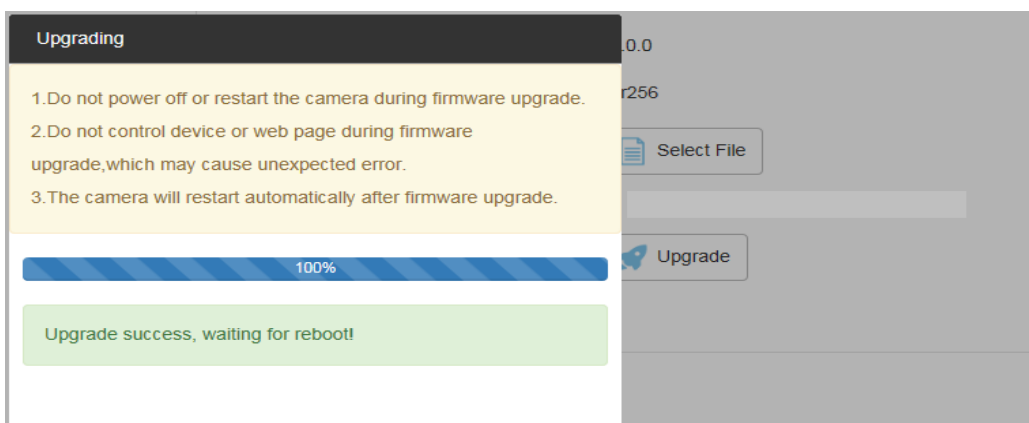
3. Click "select file" to select the correct upgraded firmware



4. Click the “Upgrade” button to start the upgrade



5. Until the following screen indicates the successful upgrade, but does not mean that the upgrade is now complete, then the camera will automatically reboot and initialize the default parameters, in this process, please do not disconnect the power, you must wait for the camera SDI signal back to normal before you can cut off the power, otherwise it may cause the camera can not work properly;.



6. When the camera reboot is complete, log back into the web interface, select Setting->Reset to default tab, then select Reset completely, reset the camera, and after the camera is completely reset, complete all the upgrade work



Note: If the web interface progress bar in the upgrade process will be stuck near 97%, please wait patiently, you must also wait until the camera automatically reboot and SDI signal back to normal before you can cut off the power, otherwise it may cause the camera can not work properly, under normal circumstances as long as the camera automatically reboot successfully, are said to upgrade successfully;

Upgrade method 2: Use Telycam upgrade tool to upgrade

Warning: Please confirm the following items before upgrading

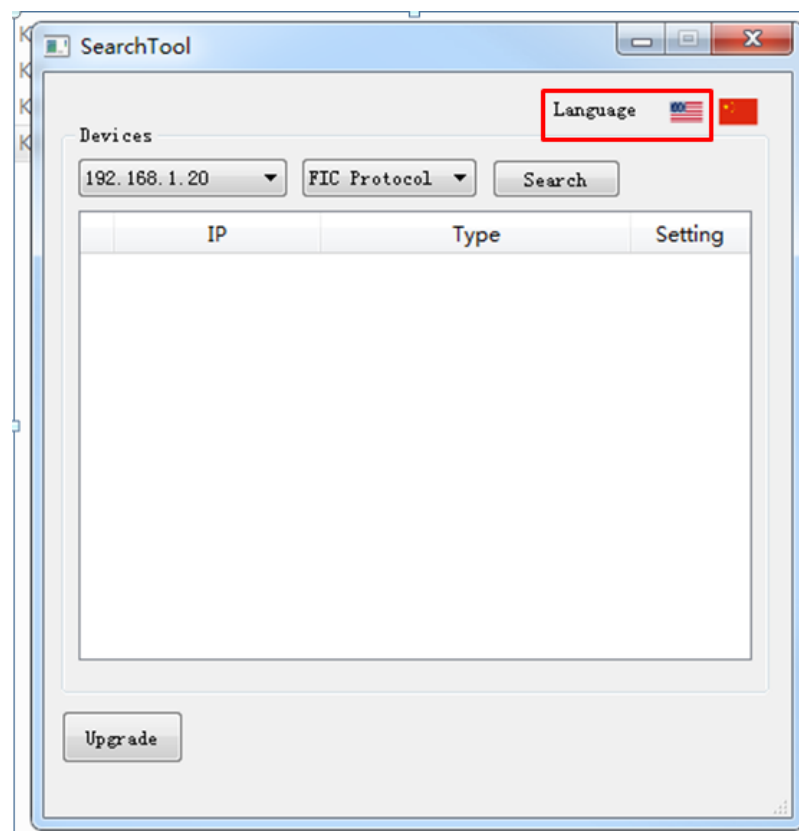
1. Please make sure you have set the right IP address, Gateway, and subnet mask.
2. Please make sure there are no two devices with the same IP address on the network, otherwise, the upgrade process may cause one of the cameras to be abnormal.
3. Make sure the network connection between the camera and PC is reliable before upgrading, the connection between the camera and the PC needs to be connected through a switch or router (recommended).

1. Download the Camera Search Tool in the website

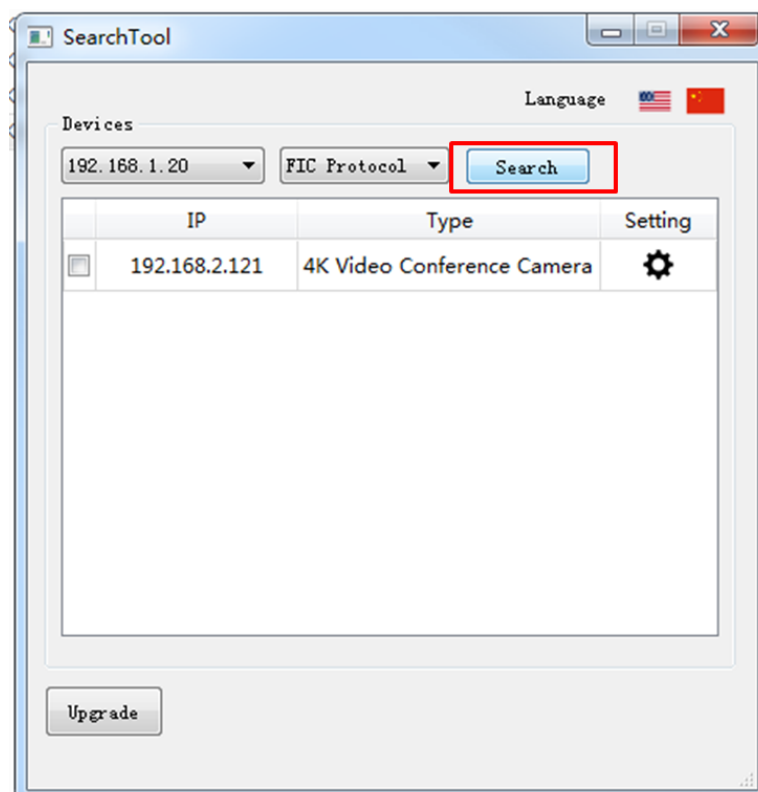
<https://telycam.com/downloads#software> . Open "SearchTool.exe" ;

imageformats	2018/1/31 星期...	文件夹	
platforms	2018/1/31 星期...	文件夹	
dllProtocol.dll	2017/11/4 星期...	应用程序扩展	20 KB
msvcp100.dll	2017/11/4 星期...	应用程序扩展	412 KB
msvcr100.dll	2017/11/4 星期...	应用程序扩展	756 KB
Qt5Core.dll	2017/11/4 星期...	应用程序扩展	4,544 KB
Qt5Gui.dll	2017/11/4 星期...	应用程序扩展	4,763 KB
Qt5Network.dll	2017/11/4 星期...	应用程序扩展	838 KB
Qt5Widgets.dll	2017/11/4 星期...	应用程序扩展	4,386 KB
SearchTool.exe	2017/11/11 星期...	应用程序	141 KB

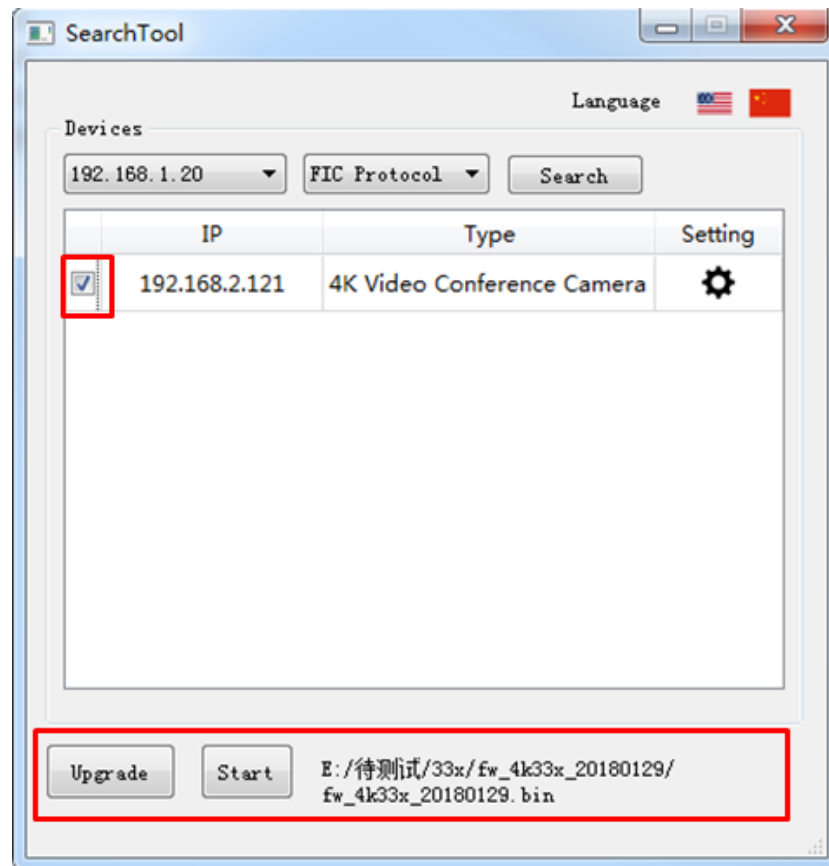
2. select language.



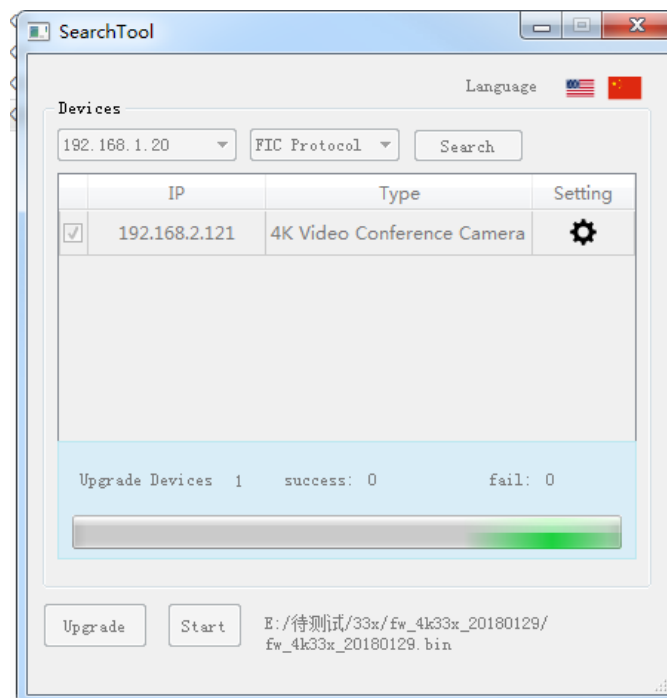
3. click "Search" to search the cameras online;



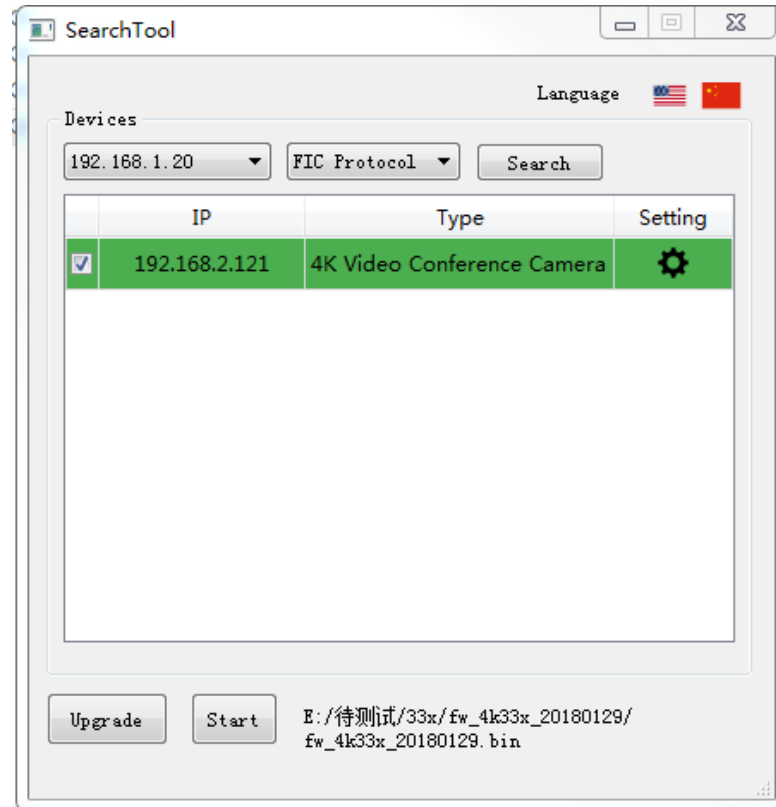
4. select the camera we want to upgrade, click "Upgrade" to select the FW;



5. Click "Start" to start upgrade;



6. After finishing the upgrade, the camera will automatically reboot and initialize the default parameters, please do not disconnect the power during this process, you must wait for the camera SDI signal to return to normal before you can cut off the power, otherwise, it may cause the camera not work properly.



7. After the camera reboot is complete, log back into the web interface, select Setting->Reset to default tab, then select Reset completely, reset the camera, and after the camera is completely reset, complete all the upgrade work;

